



STIRRUP SURFACE

STIRRUP SURFACE

Prefabricated reinforcements for masonry and
concrete structures of buildings and bridges

www.stirrupsurface.com



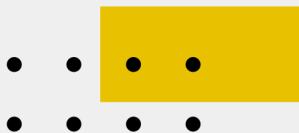
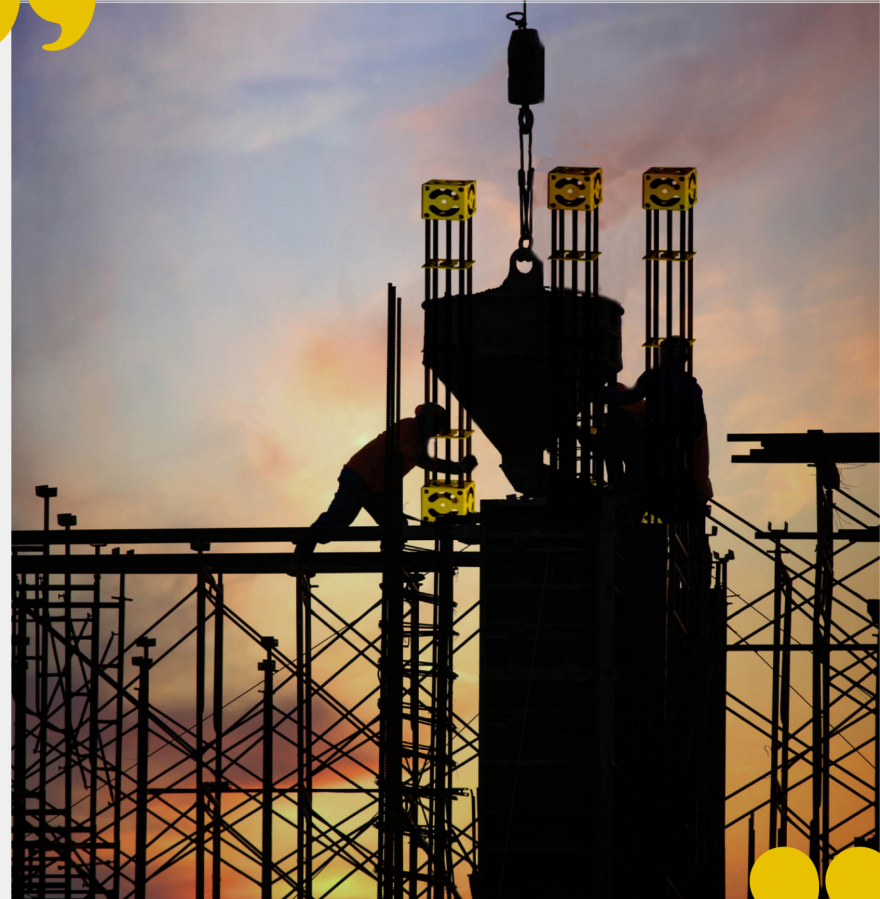


PRODUCT DESCRIPTION

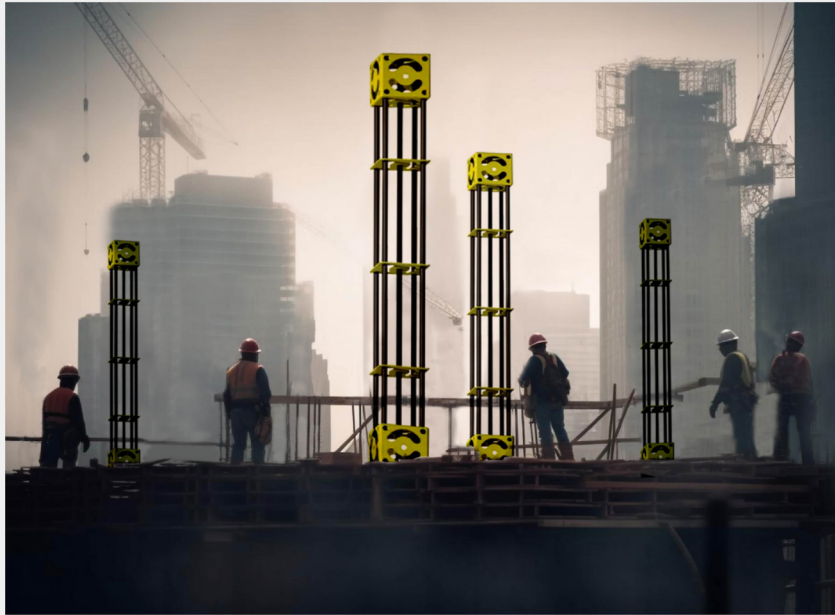


Instead of bending rebars to create stirrups in building and bridge structure, Stirrup Surface technology is invented and produced a structural sheet. This technology uses thread at the joints, which does not require welding.

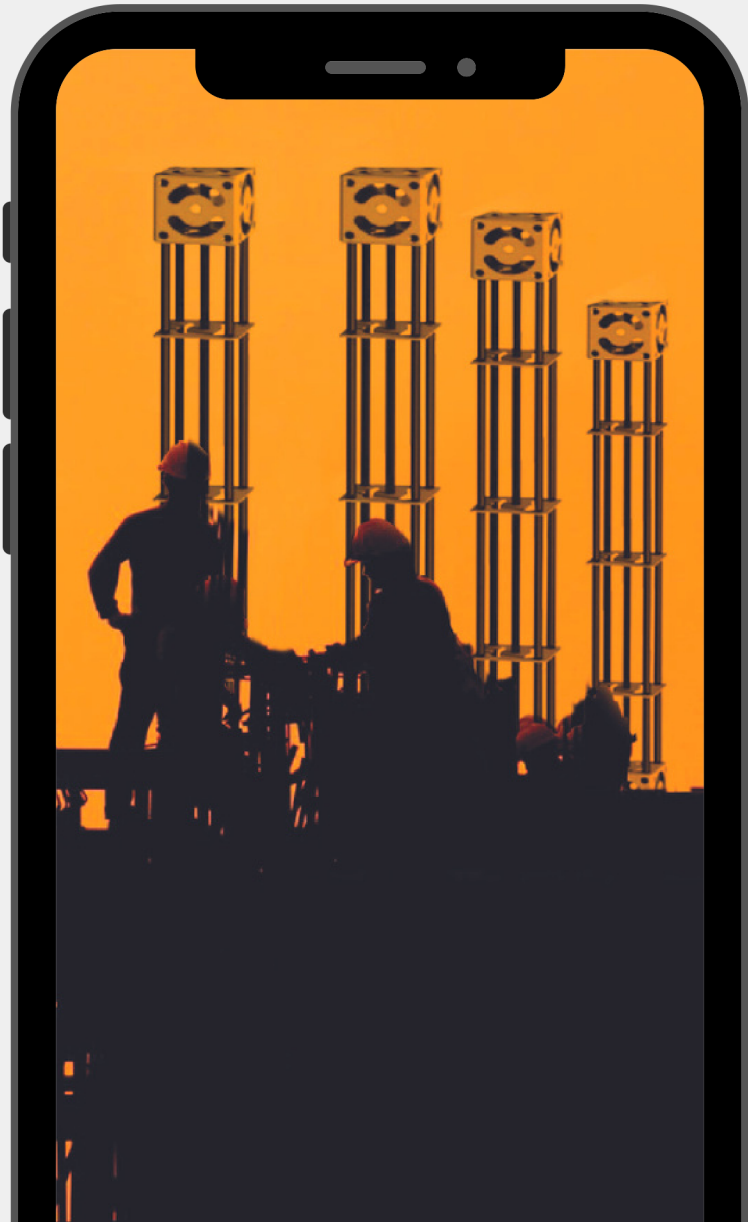
The dimension of Stirrup Surface product and its holes are based on engineering calculations which may be unique in each project. The production time for each Stirrup Surface product is 1 second for per sheet.



FEATURES



1. Save time and budget
2. Half the cost compared to the embossing method
3. The diameter of the columns is reduced
4. More accuracy in installation
5. Speed in concreting operations
6. Higher strength and resistance than current stirrup
7. Does not require rigid alignment in concreting



INNOVATIVE POINTS OF STIRRUP SURFACE

- 1.The dimension holes and surface of this product is on the base of scientific research to eliminate current stirrup in buildings and bridges structure.
- 2.Production of rectangular cans with concrete-eating cavities.
- 3.Removing the rebars needed for the coils such as stirrups, pins and ...
- 4.Much higher accuracy than the current stirrup method.
- 5.Production of 3-way reservations for fast closing of waiting rebars.
- 6.All cuts, bends and arches of the plates are based on calculations.



MARKET SIZE

The global steel rebar market size was valued at USD 214.9 billion in 2018 and is expected to grow at a CAGR of 7.2% from 2019 to 2025. The expansion of construction sector is anticipated to remain a key driver for market growth.





TEAM MEMBER



FARZAD ESLAMI
DIRECTOR OF
BUSINESS
DEVELOPMENT



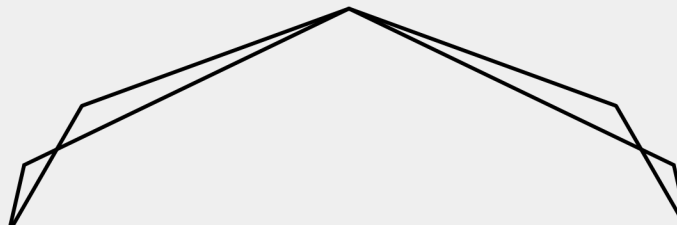
FATEMEH YAZDANI
DIRECTOR OF
RESEARCH AND
DEVELOPMENT, AND
EVALUATION



ATEFEH JAMALI FARD
CEO



RAMTIN SEIFI LATRAN
DIRECTOR OF
OPERATION





CONTACT US

✉ Info.stirrup-surface@gmail.com

in <https://www.linkedin.com/company/stirrup-surface-co>

